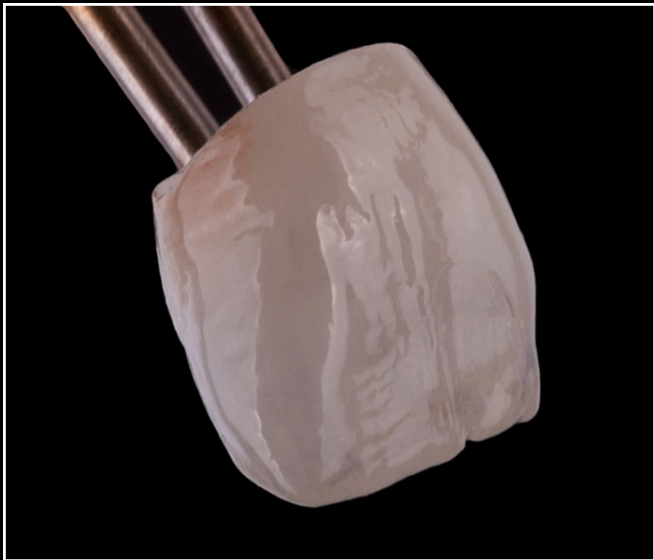




BRINGING MONOLITHIC TO LIFE

Esthetic Finishing System inspired by InSync™



case and photography by: james choi

Layered Esthetics, Monolithic Effort.

See color, form & subtle nuances before fired; no surprises

Unique viscosity structure pastes; change/add surface texture

Ability to add fluorescence, translucency & opacity; get depth & contrast

Rapid application process; produce more units daily

Less shrinkage & increased color stability; build & keep the surface texture

Control value, hue & chroma; hit your target shades easily

Firing is done in the glaze cycle; save time & money with reduced processing time

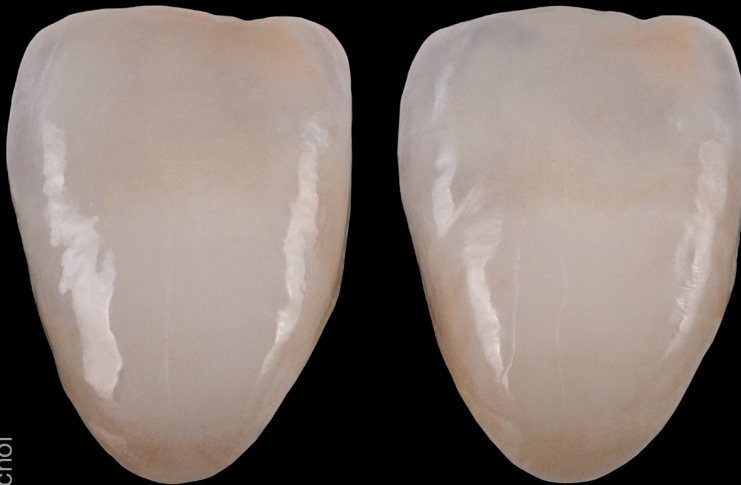
COLOR. ACCENTUATE. SHAPE.



Different form, effect and color from one zirconia shape.

reimagine monolithic.

By using the MiYO Esthetic Finishing System, your laboratory team can quickly & easily create anatomically correct, beautiful restorations & achieve all of the same effects of layering with a simple painting application process.



Hand layered

MIYO™

system components:

24 jars and 1 liquid all uniquely designed to create beautiful & detailed high-end esthetic effects for your zirconia & lithium disilicate monolithic restorations.

- Highly opacified colored glazes used to reproduce mamelons
- Medium opacity colored glazes used to create a “Halo” effect on incisal edges
- Translucent colored glazes used to replicate incisal & cervical translucency
- Translucent A, B, C, D range based colored glazes used to easily match Vita® shades
- Translucent colored glazes for raising and lowering value
- Unique viscosity structure pastes used to build structure & surface texture. Structure pastes contain layering materials that fully glaze when fired but retain fine surface detail. Structure pastes exhibit a light scattering effect similar to layered enamels but in thicknesses as little as 0.1mm which make them ideal for monolithic restorations.
- InSync Glaze Paste
- InSync Glaze Liquid