

GENERAL MULTILAYERED CAM NESTING CONSIDERATIONS

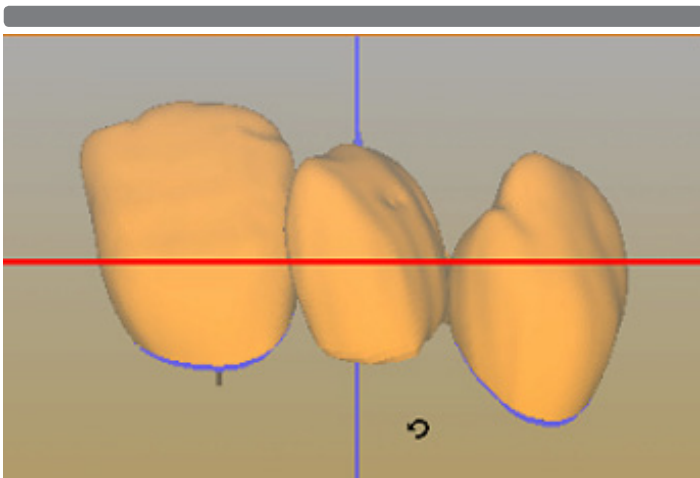
Multilayered material discs are gradient pre-shaded material; each disc is labeled with an incisal direction.

It is important to consider placement within the disc while nesting units using your CAM software. To maximize consistency throughout your restoration some form of tilting and/or adjustment in vertical position may be required.

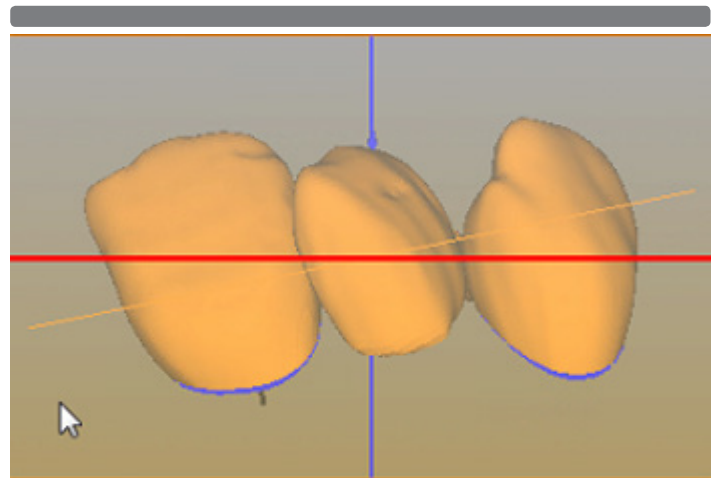
Please use the before and after photos below as an example of the movements or placement that will be necessary for optimal esthetics with Multilayered materials.

These types of movements and placement options may not be available with all software and all machining systems. Please contact your CAM reseller for information on performing these adjustments.

BEFORE Tilt Action



AFTER Tilt Action



If you are a Preciso CAM user, please visit Jensen's Education website at <http://jensendental.com/preciso-cam-videos/> or contact Jensen Technical support at 800-528-5531 for best techniques on performing these adjustments.